

ALHAMBRA PALACE

ALOHA, NUEVA ANDALUCÍA



ENCHANTING PALATIAL RESIDENCE WITH FASCINATING INTERIORS IN NUEVA ANDALUCIA

Alhambra Palace stands as an architectural masterpiece, seamlessly blending traditional Andalusian aesthetics with Moorish influences, creating a palatial residence that is both enchanting and evocative. Nestled on a sprawling plot exceeding 4000m², This residence is not merely a home; it is an immersive experience that captures the essence of its surroundings.

Beds: 10+2 | **Baths:** 11+1 | **Plot:** 4.350m² | **Built:** 1.467m² | **Terrace:** 267m² | **Parking:** 12 cars | **Orientation:** S/W



The meticulous attention to detail in its design transports residents to a world of opulence, reminiscent of the rich cultural heritage of Andalusia. Upon arrival there is a stunning patio, adorned with two fountains, which serves as a prelude to the exquisite interiors that follow.





The immaculate garden, adorned with a lagoon-inspired private pool and a charming outdoor pergola, allows residents to indulge in the ultimate luxury of serenity and leisure. The various terraces provide versatile settings, from intimate alfresco dining areas to tranquil spots for relaxation, making every corner of this property a canvas for luxurious living and entertainment. Meticulous landscaping adds a layer of privacy and beauty to the gardens.



The kitchen, a haven for culinary enthusiasts, not only boasts grandeur in design but also offers practicality with its abundance of storage space, catering to the needs of both functionality and aesthetics.





Inside, the recently-refurbished villa is a showcase of sophistication. Carefully selected furniture and fixtures adorn the living spaces, creating an atmosphere of refined elegance. The abundance of windows and glass sliding doors ensures that natural light floods the living spaces, creating a seamless harmony between the indoor and outdoor realms. The open-plan living and dining area, with its lofty ceilings, further amplifies the sense of grandeur and spaciousness.







The unique architectural layout of Alhambra Palace allows for the perfect balance of privacy and connectivity. En-suite guest bedrooms offer comfort and style, with direct access to the captivating central patio. The master bedroom, situated on the ground level, is a sanctuary of luxury, featuring impeccable interior design, a sumptuous private bathroom and a spacious walk-in closet.









Descending to the lower level, residents are treated to a wealth of amenities. A fully equipped outdoor gym invites health and wellness enthusiasts, while a custom traditional bodega, entertainment room and cinema room cater to leisure and social gatherings.



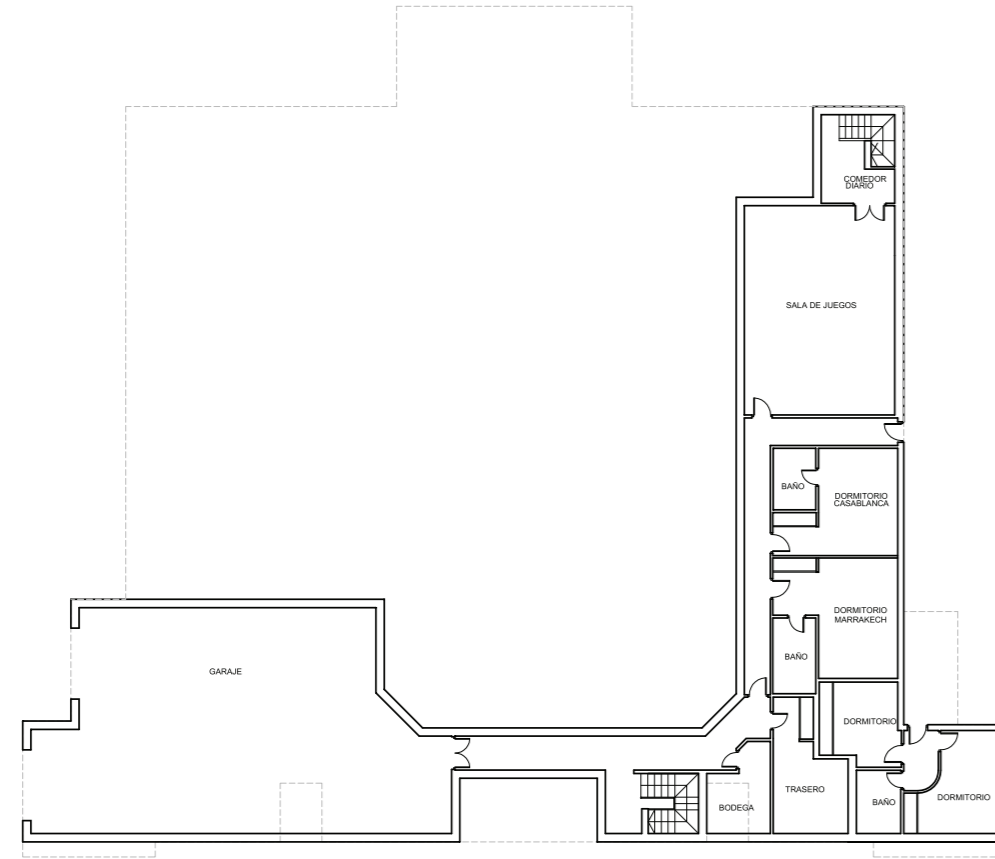




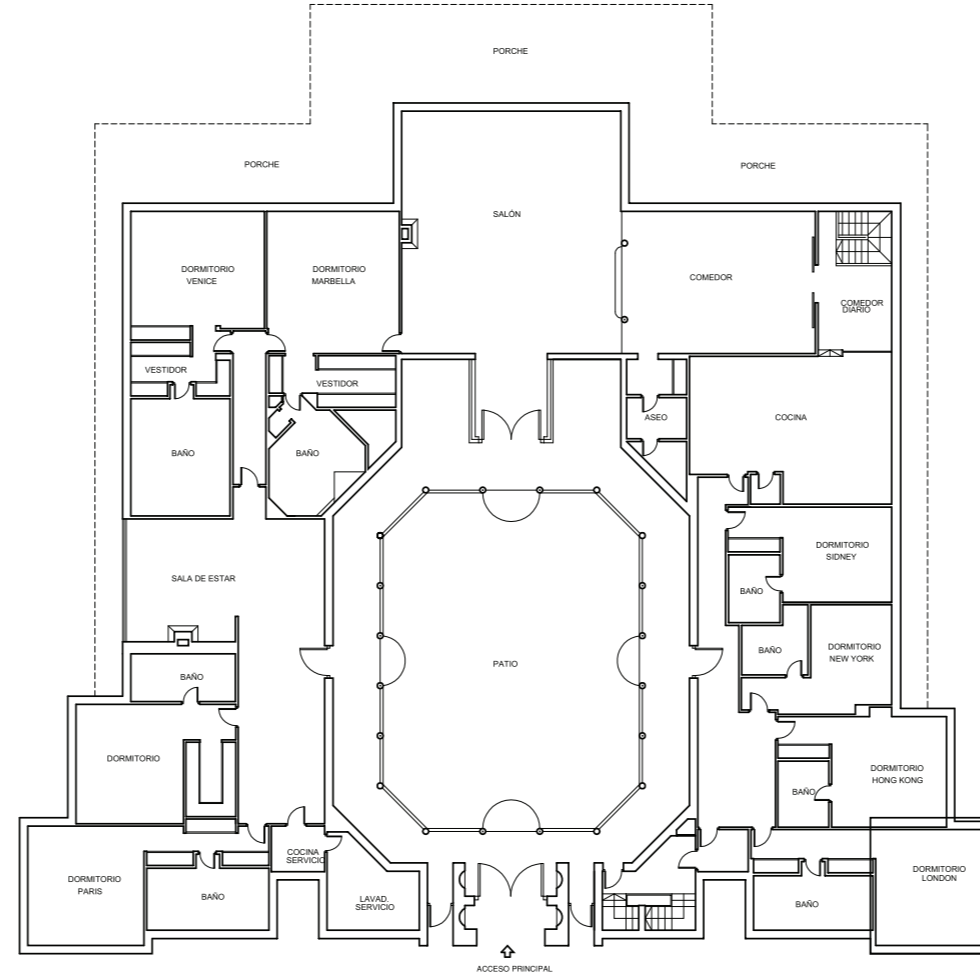


Alhambra Palace boasts a prime location in Nueva Andalucia. The villa's location in the Golf Valley ensures unparalleled convenience. Quick access to Nueva Andalucia's amenities, world-class golf courses, the famed Puerto Banus and the luxurious Marbella Golden Mile make Villa Alhambra a residence of distinction, where every detail is a testament to an elevated lifestyle.

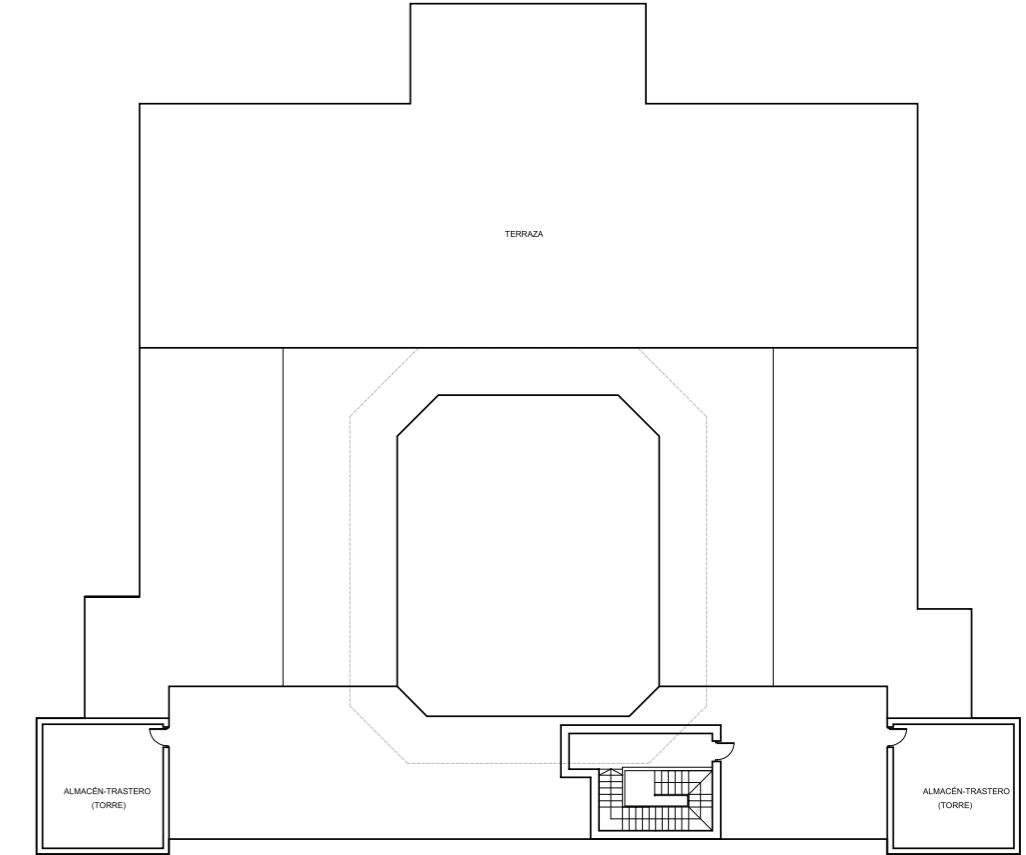
LOWER LEVEL



GROUND LEVEL



UPPER LEVEL



Beds: 10+2 | **Baths:** 11+1 | **Plot:** 4.350m² | **Built:** 1.467m² | **Terrace:** 267m² | **Parking:** 12 cars | **Orientation:** S/W

QUALITY SPECIFICATIONS

FLOORING

INTERNAL

- Wooden and marble.

EXTERNAL

- Marble floors in the exterior terraces and patio.

CARPENTRY

- Black aluminium windows, with single glazing.

KITCHEN & LAUNDRY

- Lacanche cooker.
- Gaggenau and Miele appliances.

AIR-CONDITIONING, HEATING, VENTILATION

- Hot / cold air conditioning throughout the house.
- No UFH.
- Water heating system with two 800L tanks.

ELECTRICITY, LIGHTING, SOUND, SMART SYSTEMS

- No domotic.
- Wifi.
- TVs: 85-inch Samsung television in the cinema, two Samsung televisions in the bedrooms (number 3 and 4) and a television in the kitchen (original from the house).
- Automatic blinds.

SECURITY SYSTEM

- Alarm system installed and operational.

OTHER

- Safety deposit boxes in some rooms.
- Outdoor jacuzzi.
- Exterior pool.
- Water features: fountain and pond.
- Automated irrigation system.



ALHAMBRA PALACE

ALOHA, NUEVA ANDALUCÍA