

LA LOMA DE CORTESIN



CORTIJO 1 PLANTA BAJA

3 DORMITORIOS - 3,5 BAÑOS

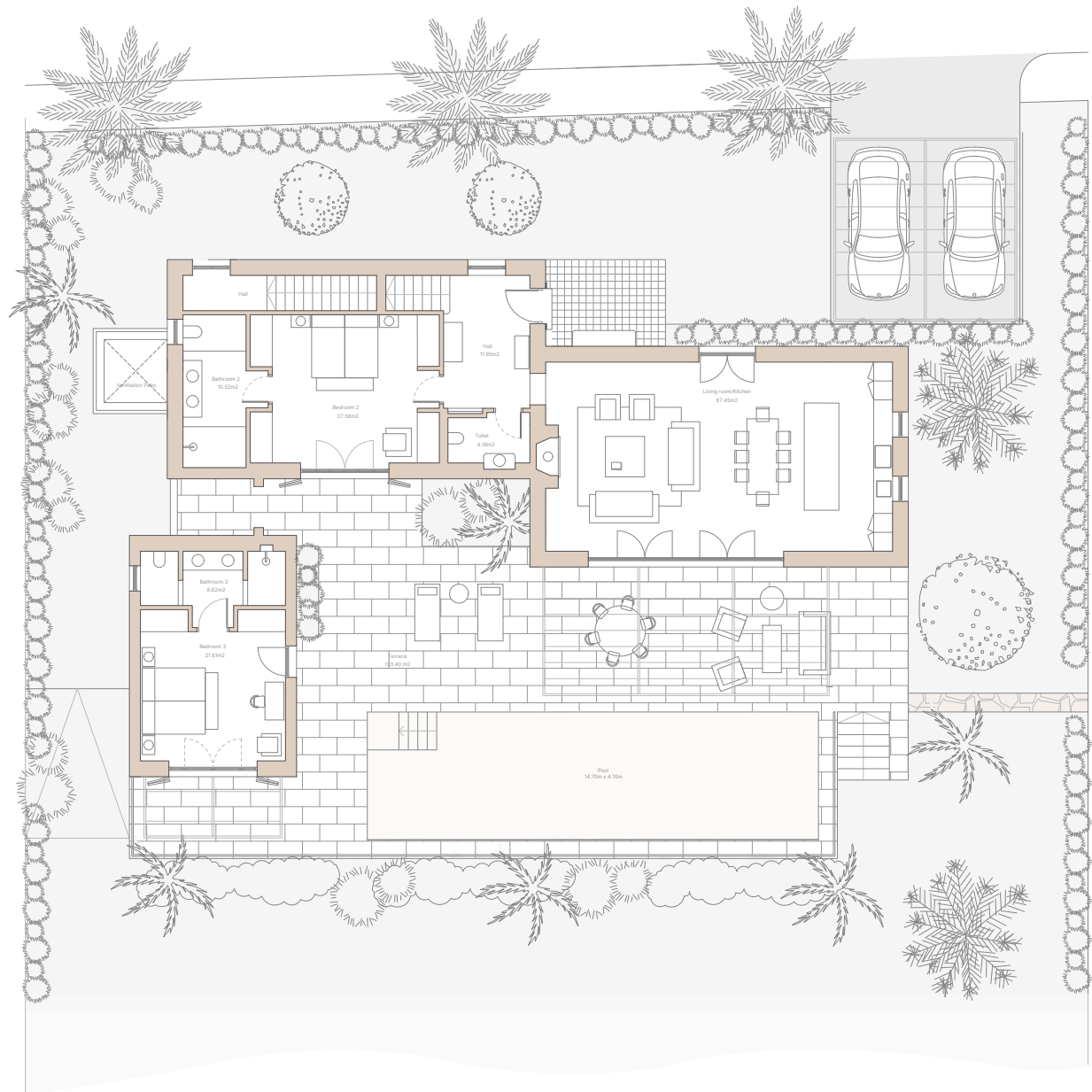
SUP. PLANTA ALTA:	74.00 m ²
SUP. PLANTA BAJA:	206.40 m ²
SUP. PLANTA SÓTANO:	80.80 m ²
TOTAL SUP. VIVIENDA:	361.20 m²
SUP. TERRAZA	133.40 m ²
SUP. PISCINA + JARDÍN	466.20 - 931.13 m ²
SUP. PARCELA	806.01 - 1,270.93 m ²

2 PLAZAS DE APARCAMIENTO Y TRASTERO

CORTIJO 1 GROUND FLOOR

FIRST FLOOR AREA	74.00 m ²
GROUND FLOOR AREA	206.40 m ²
BASEMENT FLOOR AREA	80.80 m ²
TOTAL AREA	361.20 m²
TERRACE	133.40 m ²
POOL + GARDEN AREA:	466.20 - 931.13 m ²
PLOT AREA:	806.01 - 1,270.93 m ²

2 PARKING SPACES AND STORAGE ROOM





CORTIJO 1
PLANTA ALTA Y SÓTANO

3 DORMITORIOS - 3,5 BAÑOS

SUP. PLANTA ALTA:	74.00 m ²
SUP. PLANTA BAJA:	206.40 m ²
SUP. PLANTA SÓTANO:	80.80 m ²
TOTAL SUP. VIVIENDA:	361.20 m²
SUP. TERRAZA	133.40 m ²
SUP. PISCINA + JARDÍN	466.20 - 931.13 m ²
SUP. PARCELA	806.01 - 1,270.93 m ²

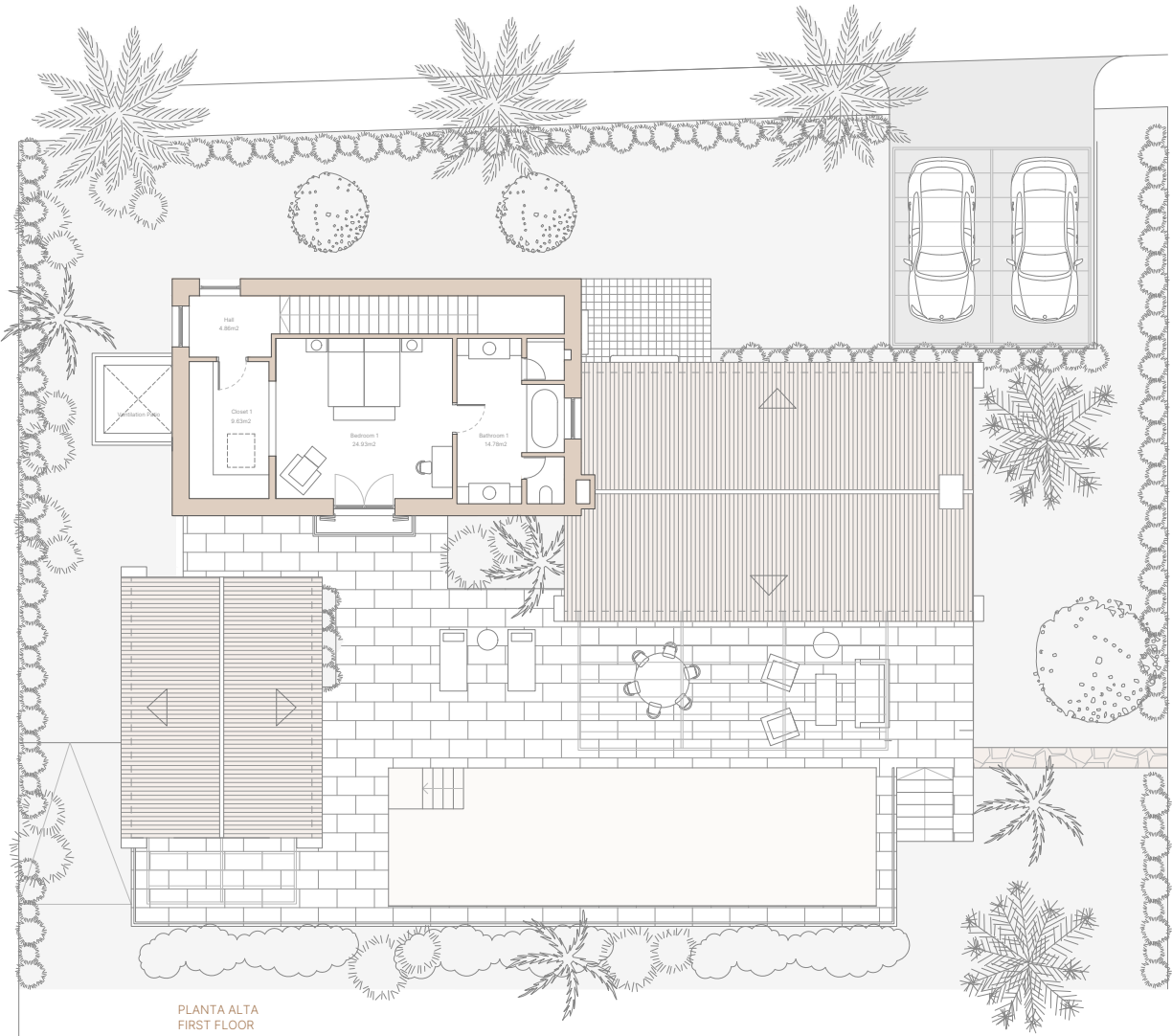
2 PLAZAS DE APARCAMIENTO Y TRASTERO

CORTIJO 1
FIRST FLOOR AND BASEMENT

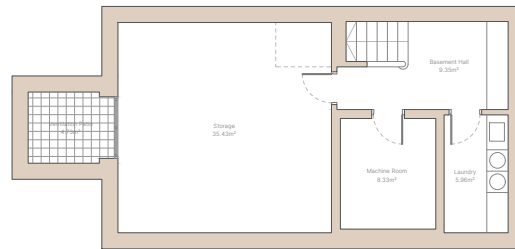
3 BEDROOMS - 3,5 BATHROOMS

FIRST FLOOR AREA	74.00 m ²
GROUND FLOOR AREA	206.40 m ²
BASEMENT FLOOR AREA	80.80 m ²
TOTAL AREA	361.20 m²
TERRACE	133.40 m ²
POOL + GARDEN AREA:	466.20 - 931.13 m ²
PLOT AREA:	806.01 - 1,270.93 m ²

2 PARKING SPACES AND STORAGE ROOM



PLANTA ALTA
FIRST FLOOR



PLANTA SÓTANO
BASEMENT

